

SPARK TIP & TAIL CLIPS

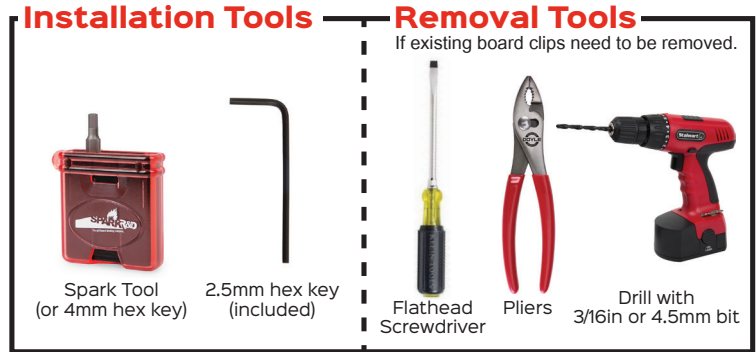
Instructions and Setup Guide

Spark R&D will not be held liable for product damage due to user error.
Read all instructions before beginning!

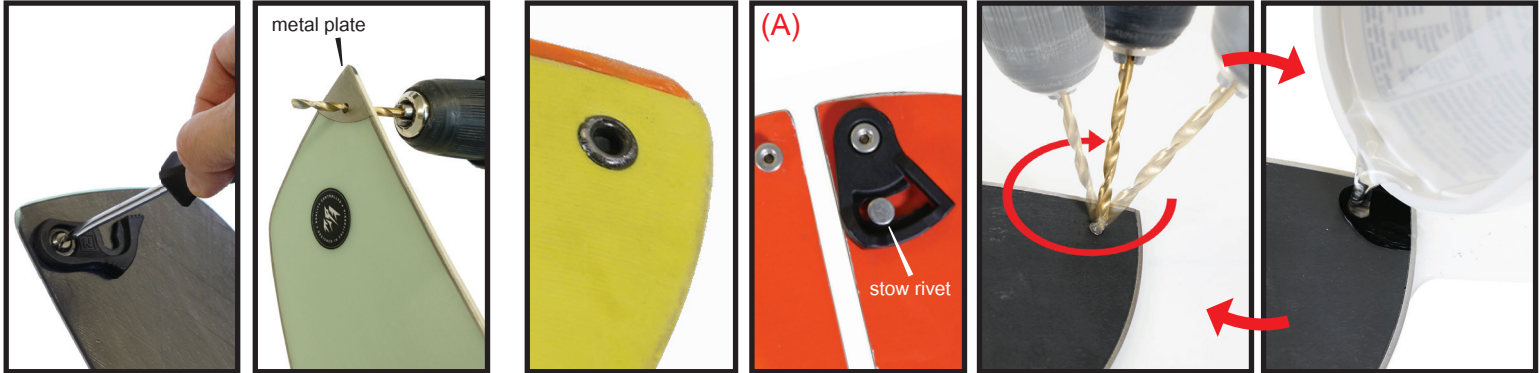
Compatibility:

Compatible with all splitboards using the industry standard splitboard tip & tail clip hole pattern.

Not compatible with 3-piece or 4-piece splitboards.



Setup Instructions: Clip Removal



SCREW MOUNTED CLIP REMOVAL

If you are using a splitboard with screw mounted clips (Nitro, Capita, Jones, etc) simply unscrew the existing clip screws and skip to installation instructions on Page 2. If your splitboard has a metal plate (Jones, Yes, etc), after unscrewing the clips you will need to drill straight through the plate with a 3/16" or 4.5mm bit to increase the hole diameter before skipping forward to installation instructions on Page 2.

RIVET STYLE CLIP REMOVAL - STEP 1

If your board has the rivet style attachment like the picture shown above, they will need to be removed following these steps. **Note: Splitboards from Burton and other brands with a third clip stow rivet ((A) above) are compatible with Spark Tip & Tail clips. These stow rivets do NOT need removal.** Using a drill with a 3/16in or 4.5mm drill bit, drill out the non-stow rivets in your splitboard starting from the base of your board. Press the drill bit gently into the rivet, rotating the drill in a slow circular motion. Drill in short intervals at a low to medium speed using water to keep the metal rivet from overheating which can melt your base. Continue this cycle until the rivet edges have been drilled away. Repeat for all non-stow rivets - two on the nose and two on the tail.



STEP 2

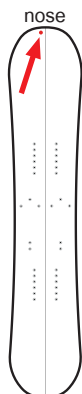
With the rivet edges drilled through on your board base, pull the rivet through the top of your board with pliers. If you feel it takes too much force to pull the rivet through, repeat Step 1 until the rivet pulls out easily.



STEP 3

Use either pliers or a screwdriver to pry the clip and rivet out simultaneously. If you feel it takes too much force to pull the rivet through, repeat Step 1 until the rivet pulls out easily. Once your rivets are removed, clean the holes of any remaining material for easy installation on Page 2.

Setup Instructions Continued: Tip & Tail Clip Installation



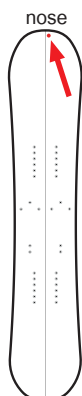
INSTALLATION - STEP 1

Press a T-nut into the top side of the left half of your board nose using pliers. Press the T-nut in as straight as possible without turning.



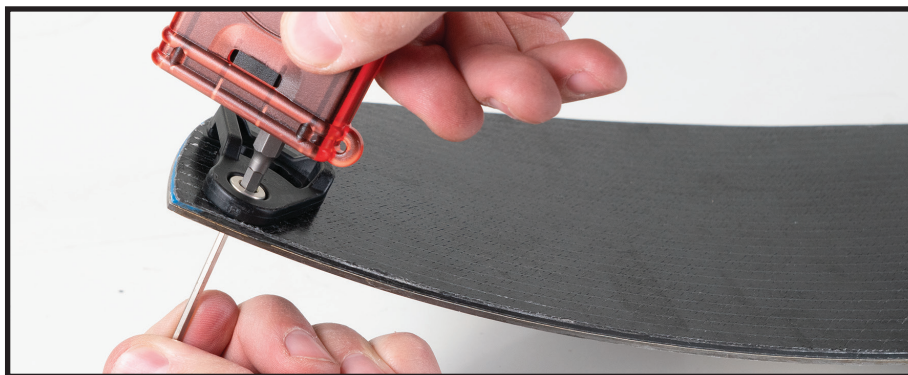
STEP 2

With the T-nut in place use the 4mm hex key on your Spark Tool to hold the T-nut in place without turning. Use the 2.5mm hex key to install the screw from the bottom of your board into the T-nut locking it in place. **Be careful not to over tighten your T-nut and screw as damage to your board or screw head may occur.**



STEP 3

Insert a second T-nut through the clip and into the top side of the right half of your board nose. Press the T-nut using pliers as straight as possible without turning.



STEP 4

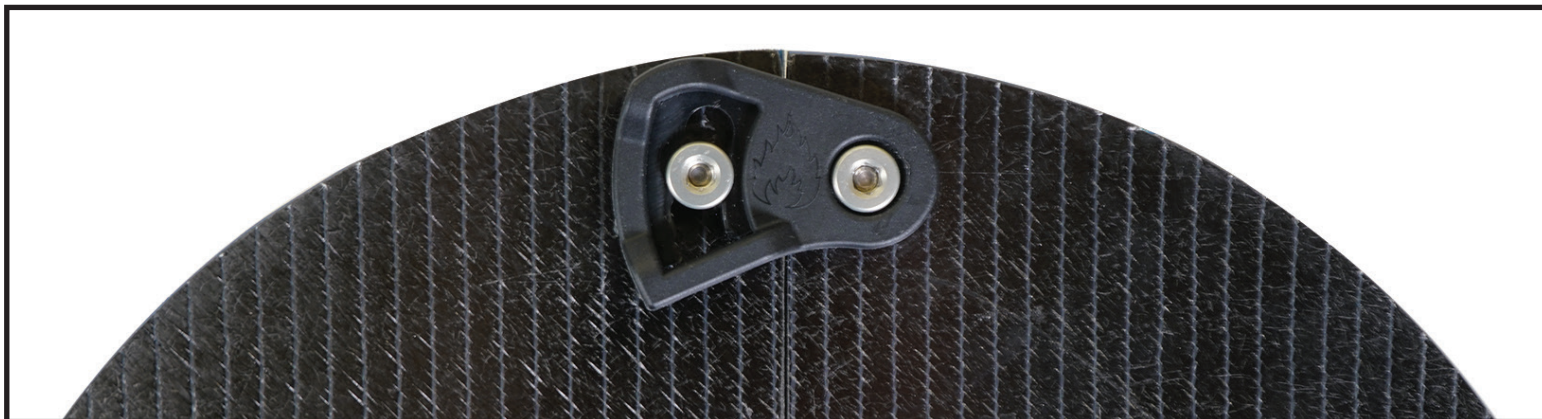
With the T-nut in place use the 4mm hex key on your Spark Tool to hold the T-nut in place without rotation. Use the 2.5mm hex key to install the screw from the bottom of your board into the T-nut locking it in place. **Be careful not to over tighten your T-nut and screw as damage to your board or screw head may occur.**

STEP 5

Rotate your board 180° to the tail end and repeat Steps 1-4.

Locked & ready to ride

Your Tip & Tail clips have five progressively tighter notches to match your board's mounting hole spacing. Use the tightest notch you can comfortably lock & unlock with gloves on.



Go Splitboarding!