

SPARK TIP & TAIL CLIPS

Instructions and Setup Guide

Spark R&D will not be held liable for product damage due to user error.
Read all instructions before beginning!

Compatibility:

Compatible with all splitboards using the industry standard splitboard tip & tail clip hole pattern.

Not compatible with 3-piece or 4-piece splitboards.

Included Parts



2x Tip & Tail Clips



4x 2.5mm
Hex Head Screws



4x 4mm
Hex Head T-nuts

Installation Tools



Spark Tool
(or 4mm hex key)



2.5mm hex key
(included)

Removal Tools

If existing board clips need to be removed.



Flathead
Screwdriver

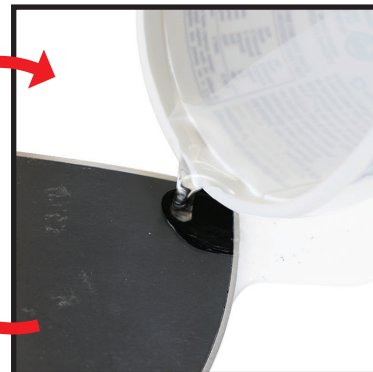
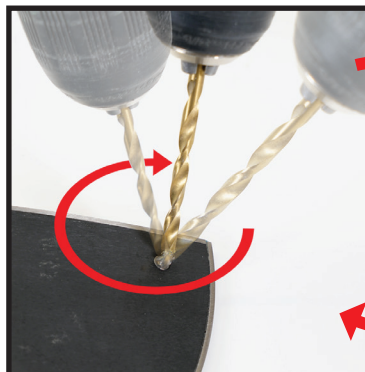
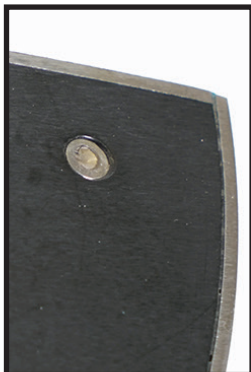


Pliers



Drill with
3/16in or 4.5mm bit

Setup Instructions: Clip Removal



REMOVAL STEP 1

This setup guide starts by removing existing clips on your board. If your board has no clips go to Page 2 Tip & Tail Clip Installation. If you are using a splitboard with screw mounted clips (Nitro, Capita, etc.) simply unscrew the existing clip screws then go to Page 2 Tip & Tail Clip Installation. If your board has the rivet styles shown above, continue on with Step 2.

STEP 2

Note: Splitboards from Burton and other brands with a third clip stow rivet ((A) above) are compatible with Spark Tip & Tail clips. These stow rivets do not need removal. Using a drill with a 3/16in or 4.5mm drill bit, drill out the non-stow rivets in your splitboard starting from the base of your board. Press the drill bit gently into the rivet, rotating the drill in a slow circular motion. Drill in short intervals at a low to medium speed using water to keep the metal rivet from overheating which can melt your base. Continue this cycle until the rivet edges have been drilled away. Repeat for all non-stow rivets - two on the nose and two on the tail.



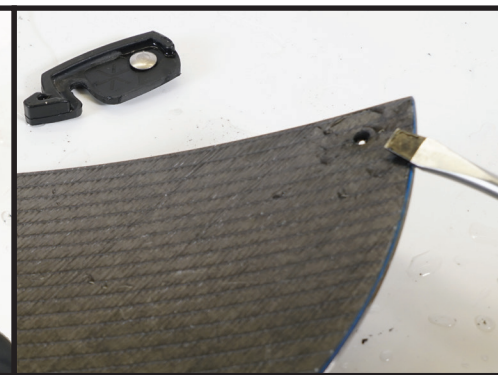
STEP 3

With the rivet edges drilled through on your board base, pull the rivet through the top of your board with pliers. If you feel it takes too much force to pull the rivet through, repeat Step 2 until the rivet pulls out easily.

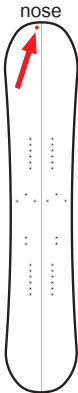


STEP 4

Use either pliers or a screwdriver to pry the clip and rivet out simultaneously. If you feel it takes too much force to pull the rivet through, repeat Step 2 until the rivet pulls out easily. Once your rivets are removed, clean the holes of any remaining material for easy installation on Page 2.

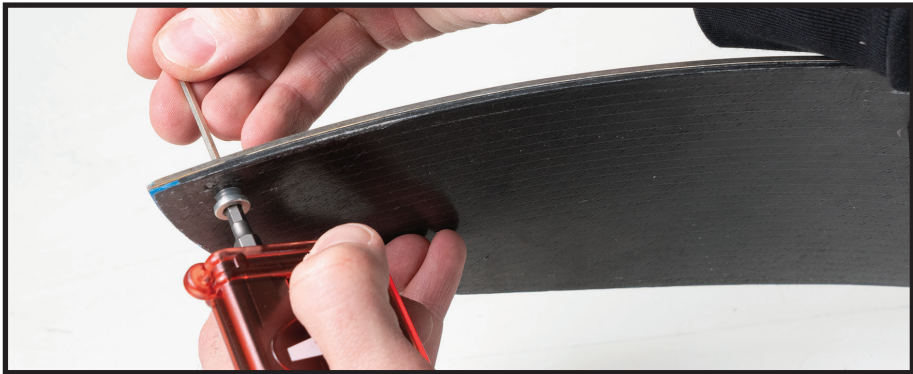


Setup Instructions Continued: **Tip & Tail Clip Installation**



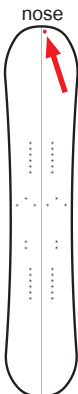
INSTALLATION STEP 1

Press a T-nut into the top side of the left half of your board nose using pliers. Press the T-nut in as straight as possible without turning.



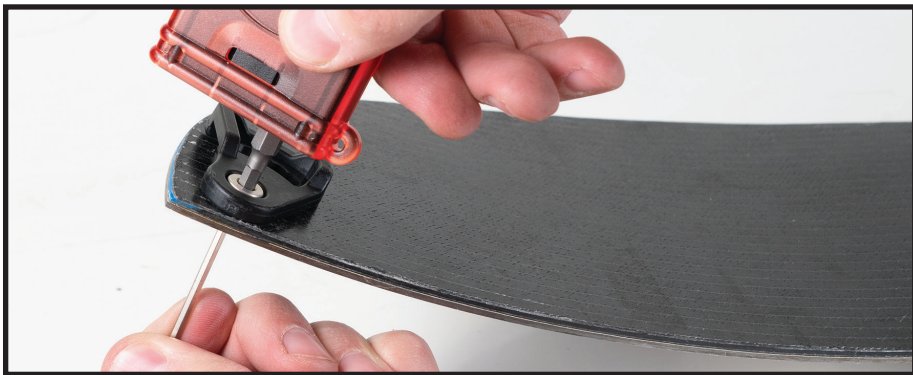
STEP 2

With the T-nut in place use the 4mm hex key on your Spark Tool to hold the T-nut in place without turning. Use the 2.5mm hex key to install the screw from the bottom of your board into the T-nut locking it in place. **Be careful not to over tighten your T-nut and screw as damage to your board or screw head may occur.**



STEP 3

Insert a second T-nut through the clip and into the top side of the right half of your board nose. Press the T-nut using pliers as straight as possible without turning.



STEP 4

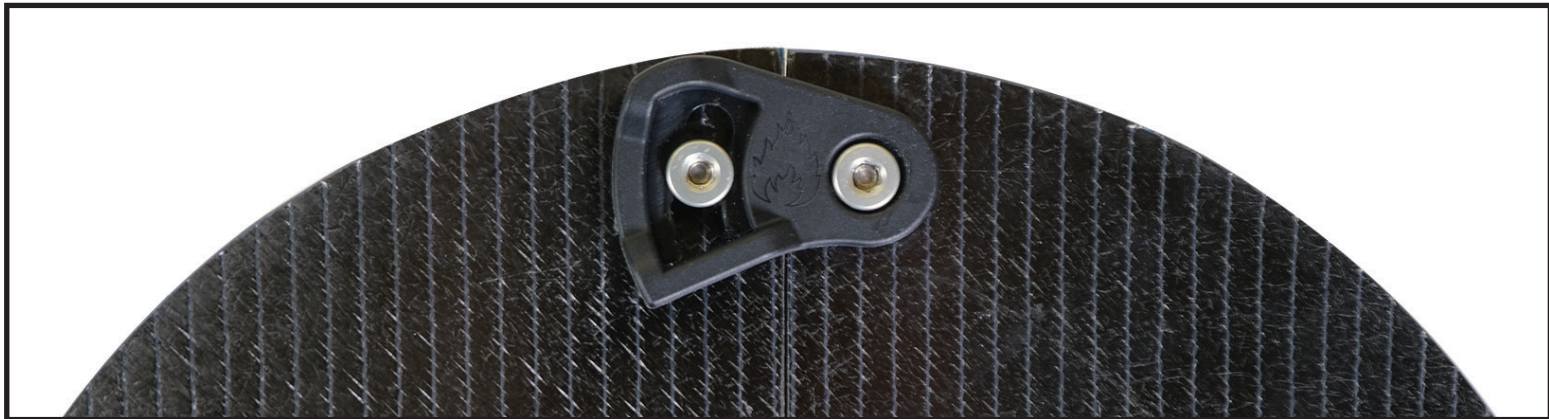
With the T-nut in place use the 4mm hex key on your Spark Tool to hold the T-nut in place without rotation. Use the 2.5mm hex key to install the screw from the bottom of your board into the T-nut locking it in place. **Be careful not to over tighten your T-nut and screw as damage to your board or screw head may occur.**

STEP 5

Rotate your board 180° to the tail end and repeat Steps 1-4.

Locked & ready to ride

Your Tip & Tail clips have five progressively tighter notches to match your board's mounting hole spacing. Use the tightest notch you can comfortably lock & unlock with gloves on.



Go Splitboarding!