

ZIP STRIPS

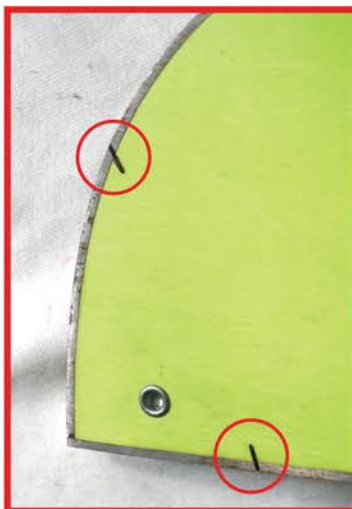
SETUP & USER GUIDE

1 Compatibility check

For Spark skins: Install your skins as normal. Check that you can move your tailclips out two to three sets of holes on your tail stretchers. Installing the new tipclips will shorten your skins by 1.75 inches (4.5 cm). Put a mark on your board at the end of the skin, remove your skins and using the gauge on the left, make another mark on your board 1.75in (4.5cm) toward the nose. Install your skins tail first starting from the new mark and check how the skin covers your base. If the base coverage isn't satisfactory or your clips are too close to the end of the tail stretcher please return this kit to your place of purchase.

Note: You may need to fine tune the trim on your skins after installation due to this length change.

For all other skins:



Place the tipclip on your board. Make a small mark on the edges of the board where the hooks grab it. Install your skins on the board so that the plush material covers the marks, you may need to slide your skins forward. This will be how your skins fit on your board after installing the zip strip kit. This shift may make your skins hang over the edge in some places, and move in from the edges in others. Check that the base coverage is to your satisfaction. If your skins will not fit your board well in this new position please return this kit to your place of purchase. **Note:** You may need to fine tune the trim your skins after installation due to this length change.

2 Take a deep breath. Remove the current tipclips from your skins. For Spark R&D/G3/Burton/Prior skins cut around the border of the plastic tipclip.

For Voile, Kohla and other skins with riveted tipclips drill out the rivets in the tipclip attachment plate and remove it.

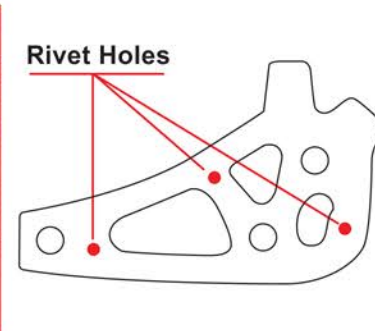
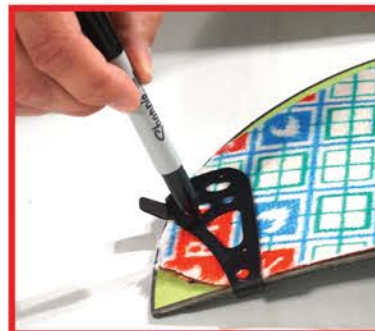
For Jones, Montana and other skins with sewn on tipclips use a razor blade to remove stitching on the tip attachment.



4 Remove the tipclip and align the plastic slip plate with the rivet marks. Trace the front edge of the slip plate. If the line doesn't go all the way across the skin, continue drawing the line down to transition into the existing skin curve. **Pro tip:** place your other skin on top and use that curve as a guide. Cut off the excess fabric.



3 Apply your skins to your splitboard. Place the tipclip over the skin and clip it to the tip of your splitboard. If you can't fit the clip over your splitboard and skins, use pliers to gently bend the clip tabs out slightly. Check that there is skin material under the entire clip. If not, reattach the skins further toward the tip of the board until there is material under the clip. If skin material is hanging over the edge of the board, trim it back to the board tip shape. Once satisfied with the clip position mark a dot on the skins through the three rivet holes.



5 Fold skin in half leaving the front 2 inches (5cm) exposed. Stick the zip loc bag that this kit came in onto the exposed glue on the back of the skins to protect it. Hammer the nail just through the tip of the skin into the three dots using a wood block as a backer. Be sure to push the nail all the way through the holes by hand to insure the correct hole size.



Included parts - Universal Skin kit:

2x tailclips	1x nail
2x tipclips	2x zip strips
2x stretchers	2x bungee cords
2x plastic washers	1x hole punch
2x pieces of webbing	2x plastic slip plates
20x rivets	1x aluminum rivet plate
20x rivet caps	

Included parts - Spark Skins:

2x tailclips	2x zip strips
2x tipclips	2x bungee cords
7x rivets	1x hole punch
7x rivet caps	2x plastic slip plates
1x nail	1x aluminum rivet plate

Required Tools (not included):

marker	In some cases a drill or
hammer	pliers may also be needed
scissors or utility knife	
small scrap piece of wood	

SPARK R&D

ZIP STRIPS

SETUP & USER GUIDE

This guide will walk you through the steps on mounting Zip Strips to your skins. Follow these instructions and you will be set up and ready to go in 30-60 minutes.

Spark R&D will not be held liable for product damage due to user error.

Read all instructions before beginning!

Zip Strips are not recommended for swallowtail splitboards.

For additional instructions visit sparkrandd.com/gear/zip-strips

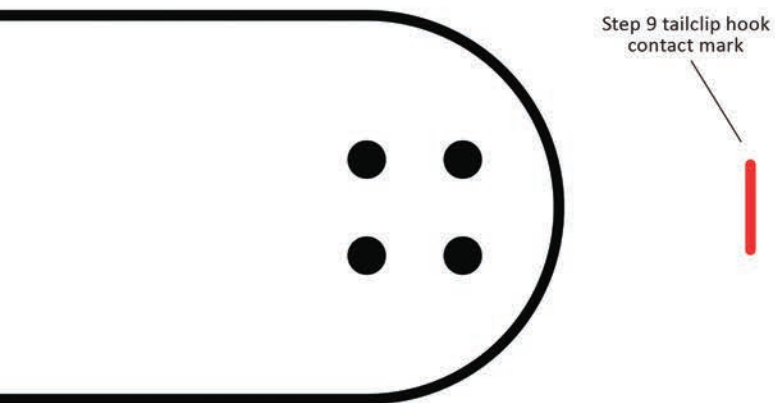


Not recommended for use with G3 Split skins 15/16 onward.

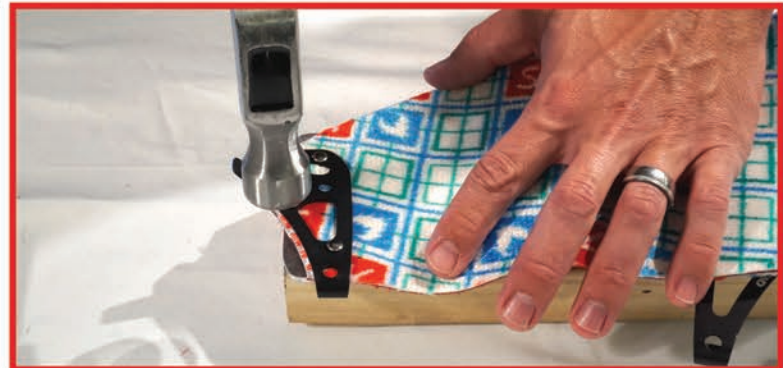
6 Remove the bag from the back of the skin. Align the tipclip with the skin and push the male side of three rivets through the clip and the skin. Flip the skin over and place the plastic slip plate over the rivets. Install caps on the rivets.



10 Place strip on this diagram lining up your mark from step 9 with the red mark. Trace the outer shape and mark the four dots on the tail end with a marker. Trim the strip to this shape.



7 Put the aluminum rivet plate on your wood block and then put the skin on top of it clip side up. Using a hammer, tap each rivet 5-10 times straight down onto each rivet. Non-vertical taps will lead to crooked rivets (which is why we gave you an extra set, just in case)



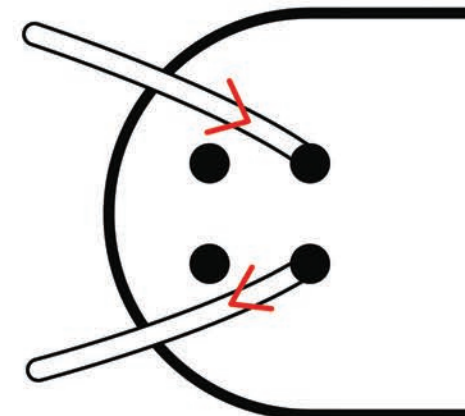
11 Place the zip strip tail on the wood block. Use the included punch with your hammer to make four holes in the zip strip on the marks.



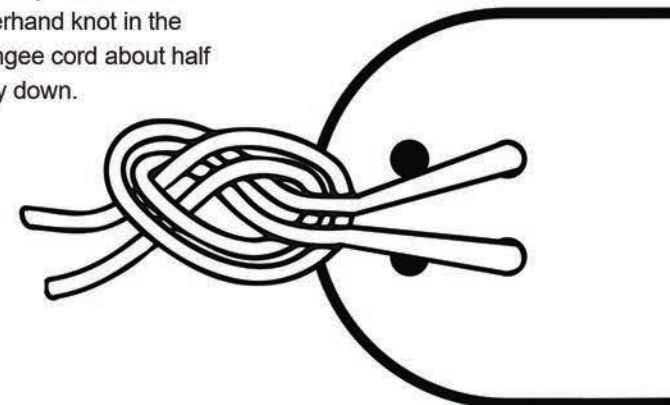
8 For the universal kit, mount the tailclips per the included instructions. For Spark GNARgyle skins, replace the tailclip with the zip strip tailclip. Spark Crossword skins will come pre equipped with zip strip tailclips. Keep the extra tailclips as spares.



12 Thread the bungee cord through the zip strip following this diagram.



Loosely tie a double overhand knot in the bungee cord about half way down.



9 Hook the zip strip on the tipclip hook with the textured side contacting the skin. Pull the zip strip straight back and make a mark on the strip where the tailclip hook contacts it.



13 Stretch the bungee onto the tail hook. Adjust the knot position to dial in the tension on the zip strip. Repeat for your other skin.



You're done! Go skin the flats like you're on cross country skis.